

# 汽车行驶记录仪

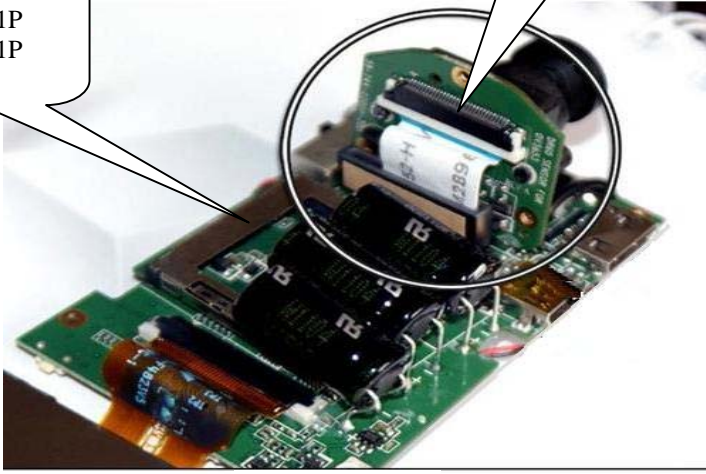
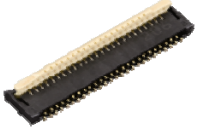


FPC 连接器			
Pitch	0.2mm pitch	0.3mm pitch	0.5mm pitch
品牌			
<b>Panasonic</b> 日本松下	<b>Y2B 系列</b> H=0.9mm	<b>Y3BL 系列</b> H=0.6mm <b>Y3B 系列</b> H=0.9mm	<b>Y5B 系列</b> H=1.0mm <b>Y5BW 系列</b> H=1.0mm
<b>SCG</b> 台湾日慎	<b>BL140 系列</b> H=1.2mm	<b>BL309 系列</b> H=0.9mm <b>BL310 系列</b> H=0.9mm	<b>BL509 系列</b> H=0.9mm <b>BL115 系列</b> H=1.0mm

Panasonic SD 卡座  
AXA2R73061P  
AXA2R73361P



Panasonic/Suncagey  
FPC 连接器



摄像头接口板



电源模块

品牌	<b>PSA</b>	<b>FDK</b>	<b>NIC Components Corp.</b>
主要 产品	<p>功率电感：电流值：0.3~34A;电感值：1~1000uH 尺寸(mm)：L (2.5~12) *W(2.0~12)*H(1.0~6.0)</p>	<p>Multi-layer Power inductors (SMD)</p>	<p>MLCC Capacitor ultra stable</p>
	<p><b>FK&amp;FH Series:</b> Safety Certified(TUV/UL) <b>MA HV Series:</b> High Voltage(1~3KV) <b>HH Series:</b> High Q and Low ESR</p>	<p><b>MIPSUZ2012D:</b> Very Small and Very Low Profile Type <b>MIPSAZ3225D:</b> High Current Type <b>MIPSU2520D:</b> Super Low Height</p>	<p><b>NMA:</b> Automotive grade, up to +125°C <b>NMC:</b> High Capacitance X7R, X5R, Y5V <b>NMC-T:</b> High Capacitance X7R, X5R, Y5V Dielectrics, Low Profile</p>
	<p><b>FPF:</b> High Power, up to 2W <b>FMF:</b> Current Sensing, 1~50moh, 1/2~5W <b>FVF:</b> High Voltage, up to 4KV, 1W</p>	<p>Power inductors (SMT type)</p>	<p>Power Inductors (SMT type)</p>
	<p><b>TVS:</b> Transient Voltage Suppre, up to 3KW <b>Zener Diodes:</b> 150mw~5W <b>Schottky Barrier Rectifiers:</b> up to 8A <b>Super Fast Recovery Rectifiers:</b> TRR25~35ns, 1~3A</p>	<p><b>CD-C-1315A:</b> 4.7-220uH <b>CD-C-1315B:</b> 47-1000uH</p>	<p><b>NPI_C:</b> Non-Shielded; General Purpose <b>NPIS_T:</b> Wide Temperature <b>NPIS_P:</b> High Current - Wide Temperature</p>